

Bickerstaffe CE Primary School

Spring 1 - Year 4 - Painting and Mixed Media

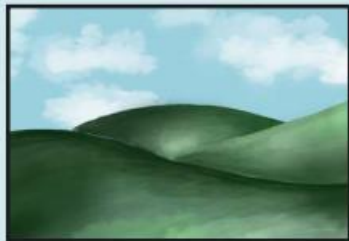
Art Knowledge Organiser

Key Vocabulary

Composition	Putting different elements together in a pleasing way.
Hue	Describing an exact colour: sky blue, dark green, rose pink.
Proportion	How big a part of something looks compared to the rest of it.
Shade	Adding black to a colour makes a shade.
Shadow	A dark area created when light is blocked.
Still life	An artwork showing a collection of things that don't move, e.g. objects rather than people.
Tint	Adding white to a colour makes a tint.
Tone	How light or dark a colour is.



Portrait



Landscape

Sticky Knowledge

Substantive (what key knowledge are we going to learn?)

Creating contrast

Contrasting texture

Contrasting colours



Painting techniques

Dabbing
Stippling
Pointillism
Adding texture to paint
Washes
Using different tools.

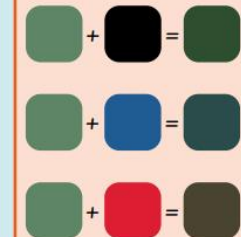
Colour Mixing



Making colours lighter:
+ a lighter colour
+ water
+ white



Making colours darker:
+ a darker colour
+ black



Using tints and shades can help a painted object appear three-dimensional.

Disciplinary (how are we going to achieve this?)

- Generate ideas from a range of stimuli, using research and evaluation of techniques.
- Use sketchbooks to record drawings and annotations, planning and taking next steps.
- Show an awareness of proportion.
- Observe individual styles.
- Use vocabulary confidently.

